

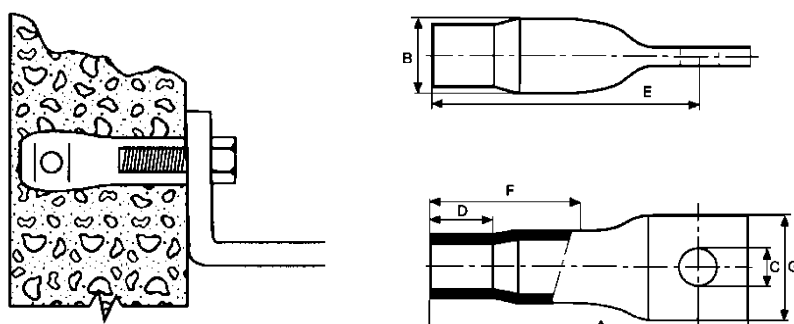
## EKC FIXING INSERT (ZINC PLATED)

Fixing inserts provide a simple and competitive fixing in concrete. The end of the insert is flattened and cross drilled to accept a reinforcing bar.

The recommended safe working loads are obtained in 22.5N/mm<sup>2</sup> concrete. These inserts are for fixing only and are not recommended for lifting or high load applications.

It is essential to screw the bolt over the full 'thread length' (Dimension D). The safe working loads of the fixing insert can be increased by adding formed rebar of sufficient length.

Care should be taken when inserts are placed close to the edge of concrete or in groups as their loading capacity is reduced. This also applies when the insert is in a recessed position. Guidelines can be obtained from the EKC Engineering section.



All dimensions in mm

### (Zinc Plated)

SIZE	CODE	SAFE WORKING LOAD kN.	A LENGTH	B OUTSIDE DIA	C SIZE OF HOLE FOR REBAR	D THREAD LENGTH	E TO CENTRE OF HOLE	F MAXIMUM SCREW IN LENGTH	G TAIL WIDTH
M10	461000	3.5	50	13.5	6.2	10	38	24	20
M12	461200	5	60	17	7.2	12	45	25	25
M12	461201	6	70	17	7.2	12	52	30	25
M16	461600	7	70	21.3	9.2	16	53	25	30
M16	461601	8	80	21.3	12.2	16	58	25	30
M16	461602	10	100	21.3	9.2	16	78	32	30
M20	462000	12.5	100	26.9	12.2	20	78	40	39
M20	462001	14	120	26.9	14.2	20	98	40	39
M24	462400	18	120	33.7	14.2	24	92	50	48
M30	463000	27.5	150	42	15.2	30	117	70	64