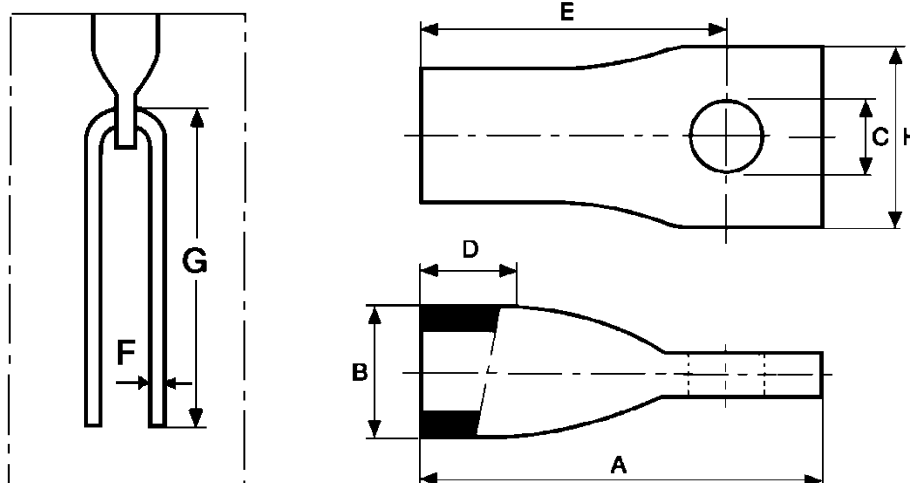


## EKC LIFTING INSERT

The cast-in insert provides an alternative to the lifting socket. It is made from tube that is threaded internally at one end and flattened with a cross-drilled hole at the other end to accept the reinforcing bar. Normally supplied without plastic sealing caps but these are available to order.



All dimensions in mm

### (Zinc Plated Steel)

SIZE	CODE	SAFE WORKING LOAD (kN)	A LENGTH	B OUTSIDE DIA	C SIZE OF HOLE FOR REBAR	D THREAD LENGTH	E TO CENTRE OF HOLE	F REBAR DIA	G REBAR LENGTH	H TAIL WIDTH
M12	421200	5	60	16.5	10	20/21	47	8	300	24
M16	421600	10	80	22.0	13	24/25	64	10	350	30
M16	421601	10	90	22.0	13	24/25	70	10	350	30
M20	422000	20	95	28.0	15	30/31	71	12	400	38
M24	422400	25	100	31.0	17	36/37	76	12	450	43
M30	423000	40	150	41	22	45/46	120	16	600	55

### (Stainless Steel)

SIZE	CODE	SAFE WORKING LOAD (kN)	A LENGTH	B OUTSIDE DIA	C SIZE OF HOLE FOR REBAR	D THREAD LENGTH	E TO CENTRE OF HOLE	F REBAR DIA	G REBAR LENGTH	H TAIL WIDTH
M12	431200	5	60	16	10	20/21	47	8	300	24
M16	431600	10	80	22	13	20/21	59	10	350	30
M20	432000	20	95	28	15	24/25	71	12	400	38
M24	432400	25	100	32	17	30/31	76	12	450	43
M30	433000	40	150	40	22	35/36	114	16	600	55

The recommended safe working loads for lifting inserts are obtained in 22.5N/mm<sup>2</sup> concrete.