

## EKC PLATE END SOCKET

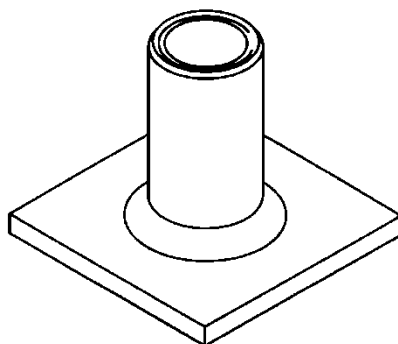


Plate end sockets comprise a threaded socket with a flat plate welded to its base. Reinforcement bars can be positioned directly on the flat steel, transmitting the tensile forces safely onto the concrete. The reinforcement plate may be welded or tied to the plate. Plate end sockets are for use in concrete panels where there is insufficient depth to allow the use of standard sockets e.g. fascia panels, floor panels' etc. All plate end sockets can be supplied with a plastic inserts (optional extra) to prevent ingress of dirt into the threads during the casting process.

All dimensions in mm

### (Zinc Plated Steel)

SIZE	CODE	SAFE WORKING LOAD kN	OVERALL HEIGHT (mm)	PLATE SIZE (mm)
M12	401250	5	30	35 x 25 x 3
M16	401650	10	35	50 x 35 x 3
M20	402050	20	47	60 x 60 x 5
M24	402450	25	54	80 x 60 x 5
M30	403050	40	72	100 x 80 x 6

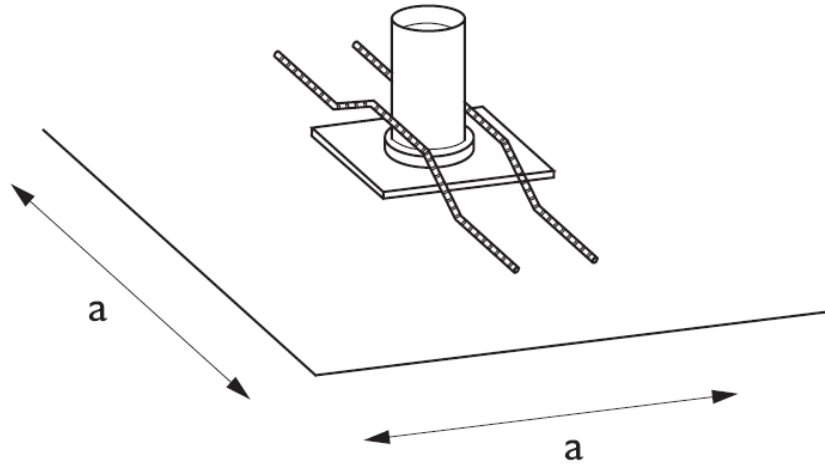
### (Stainless Steel)

SIZE	CODE	SAFE WORKING LOAD kN	OVERALL HEIGHT (mm)	PLATE SIZE (mm)
M12	411250	5	30	35 x 35 x 3
M16	411650	10	35	50 x 35 x 3
M20	412050	20	47	60 x 60 x 5
M24	412450	25	54	80 x 60 x 5
M30	413050	40	72	100 x 80 x 6

The recommended safe working loads for plate end sockets are obtained in 22.5N/mm<sup>2</sup> concrete.

## EKC PLATE END SOCKET

Please see below for edge distances and rebar detail.



Thread Size (mm)	a (mm)	b (mm)	c (mm)	Minimum Concrete Thickness
12	180	60	330	70
16	250	70	420	85
20	300	80	640	100
24	400	100	640	115
30	500	110	830	140
36	650	140	1140	170
42	650	140	1250	185
52	750	140	1530	210

